



Venetian  
blind systems



# Venetian blinds

---

Venetian blinds are modern and elegant window or door covers installed outside the buildings. They are an excellent barrier against excessive sunlight. They are suitable for adjustment of light and heat entering the room. In addition to practical values, Venetian blind can be an aesthetic decoration of the building. They feature simple and modern design, they are dedicated to facilities with a large surface area of windows or glass façades.

## advantages of our solutions

- \_ complete absence of visible mounting screws on both the guide channel and the cover box
- \_ easy and quick installation
- \_ different variants of guide channels
- \_ smooth control of the blinds (opening and closing) in the range of 90° and 180°, ensuring comfortable and individual adjustment of the degree of light penetration into the interior; changing the angle of the slats allows adjustment of the light and heat entering to the room

## offer

- \_ two types of blinds available: concealed and adapted version
- \_ concealed blind – 2 types of guide channel / concealed Z34 / embedded in the insulation layer / exposed guide channel N91 mounted directly to the joinery, with the option of width extension / cord, full guide channel N91 and guide channel on spacers D22
- \_ adapting blinds – 3 types of guide channel: cord, full concealed guide channel N91 and guide channel on spacers D22

## functionality

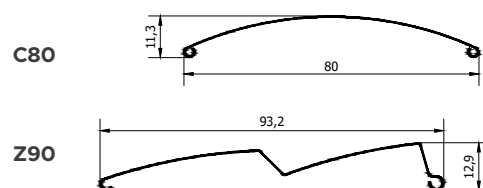
Venetian blinds allow you to control and adjust freely the amount of sunlight reaching into the building. Venetian blind can be raised and lowered, as well as the angle of the slats can be changed, which allows you to adjust not only heat supply, but also the access of light to the interior of the facility, by selecting the appropriate degree of shading. The blind change the appearance of the façade, giving it an interesting and modern feel. They are a decorative element, at the same time raising the standard of the facility. A wide range of offered guards, the interesting shape and available colours of the products ensure an aesthetic appearance, while the possibility of choosing the drive and the application of weather automation further increase the functionality of the system.

## control

- \_ wired or radio control
- \_ option of being operated with a weather automation system
- \_ option of connecting covers to a smart home management system

## technical data

- \_ slats made of high-quality aluminium
- \_ slats available in two shapes: C80 and Z90



## structure dimensions

Type of slat	min. width [mm]	max. width [mm]	max. height [mm]
C80	500	4 000	4 000
Z90	500	4 500	4 000

## available colours of the slats in stock

<b>RAL</b>	7016	8019	9005	9006	9016
<b>DB</b>	703				

## dedicated colours of shutter boxes and guides from Aliplast palette

<b>RAL</b>	7016i	8019i	9005i	9006i	9016i
<b>DB</b>	703T				

\* Other colours are available on request

Quality and colour fastness are guaranteed by the following certificates: Qualicoat 1518, Qualideco PL-0001 and Qualanod 1808.

Venetian blinds  
- a perfect solution for  
demanding customers



Venetian blind systems

Standard external blind  
with the **C80** profile

---

## product specification

- \_ the cover box consists of extruded profiles and protective metal sheets
- \_ typical stock heights of the cover box: 220, 270, 320, 350 mm / non-standard heights – available on request
- \_ aluminium slats – cross-section of the shape of the letter C
- \_ the slats equipped in staggered arrangement with a “slat guiding component”
- \_ textile strip – the strip is made of special textile materials
- \_ ladder in grey or black, made of polyester resistant to weather conditions and ultraviolet radiation
- \_ standard colours for blinds with the C80 slat: anthracite (RAL 7016), sepia brown (RAL 8014), silver (RAL 9006), white (RAL 9016), structural anthracite (DB 703), dark brown 8019, black (RAL 9005) – coating covered with highly weather-resistant varnishes
- \_ maximum dimensions: 4000 x 4000 mm
- \_ 4 cover box sizes: up to the total height:  
220 – 1993 mm / 270 – 2991 mm / 320 – 4000 mm / 350 – > 4000 mm

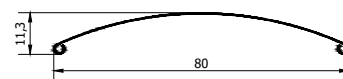
## drive

- \_ the Venetian blind system can be equipped with an electric drive for free control of the blind and the angle of inclination of the slats. The blinds equipped with a drive move smoothly, the slats position themselves perfectly, modulating the light and controlling the level of sunshine inside the house. Using top-class automation /Somfy and other manufacturers’ drives are available/, blinds can be controlled via a computer, smartphone or tablet.

## technical data

- \_ slats made of high-quality aluminium
- \_ aluminium slats - a cross-section of the shape of the letter C

C80



flush mounted external venetian blind C80



front mounted external venetian blind C80



front mounted external venetian blind C80

Modern  
design



Venetian blind systems

Standard external blind  
with the **Z90** profile

---

## product specification

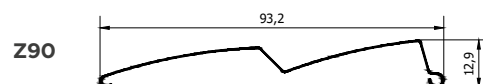
- \_ the cover box consists of extruded profiles and protective metal sheets
- \_ typical stock heights of the cover box: 220, 270, 320, 350 mm / non-standard heights – available on request
- \_ aluminium slats – a cross-section of the shape of the letter Z
- \_ the slats equipped in a staggered arrangement with a "slat guiding component"
- \_ textile strip – the strip is made of special textile materials
- \_ ladder in grey or black, made of polyester resistant to weather conditions and ultraviolet radiation
- \_ standard colours for blinds with the C80 slat: anthracite (RAL 7016), sepia brown (RAL 8014), silver (RAL 9006), white (RAL 9016), structural anthracite (DB 703), dark brown 8019, black (RAL 9005) – coating covered with highly weather-resistant varnishes
- \_ maximum dimensions: 4000 x 4000 mm
- \_ 4 cover box sizes: up to the total height: 220 – 1993 mm / 270 – 2991 mm / 320 – 4000 mm / 350 – > 4000 mm

## drive

- \_ the venetian blind system can be equipped with an electric drive for free control of the blind and the angle of inclination of the slats. The blinds equipped with a drive move smoothly, the slats position themselves perfectly, modulating the light and controlling the level of sunshine inside the house. Using top-class automation / Somfy and other manufacturers' drives are available /, blinds can be controlled via a computer, smartphone or tablet.

## technical data

- \_ slats made of high-quality aluminium
- \_ aluminium slats - a cross-section of the shape of the letter Z



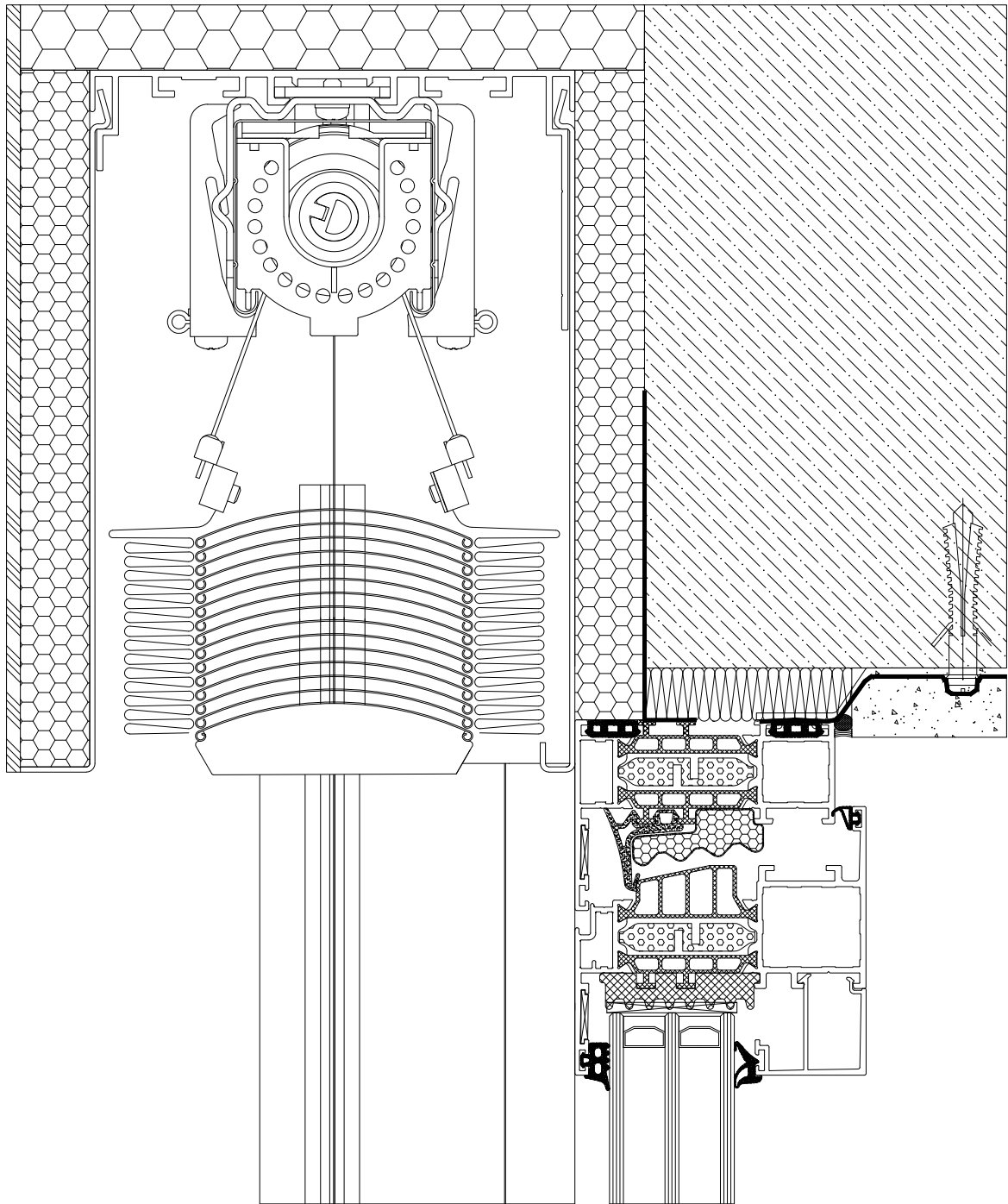
flush mounted external venetian blind Z90



front mounted external venetian blind Z90

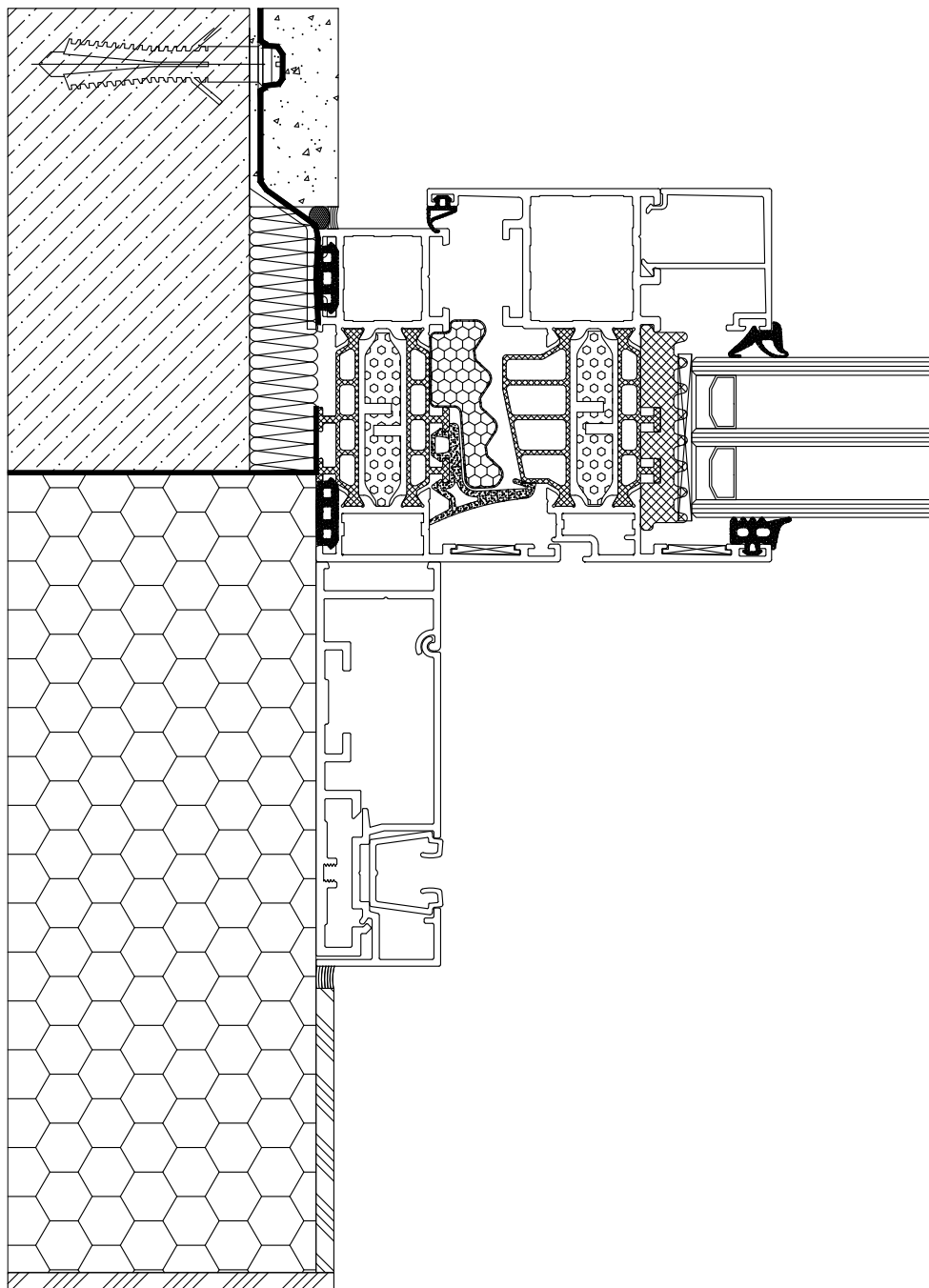


front mounted external venetian blind Z90

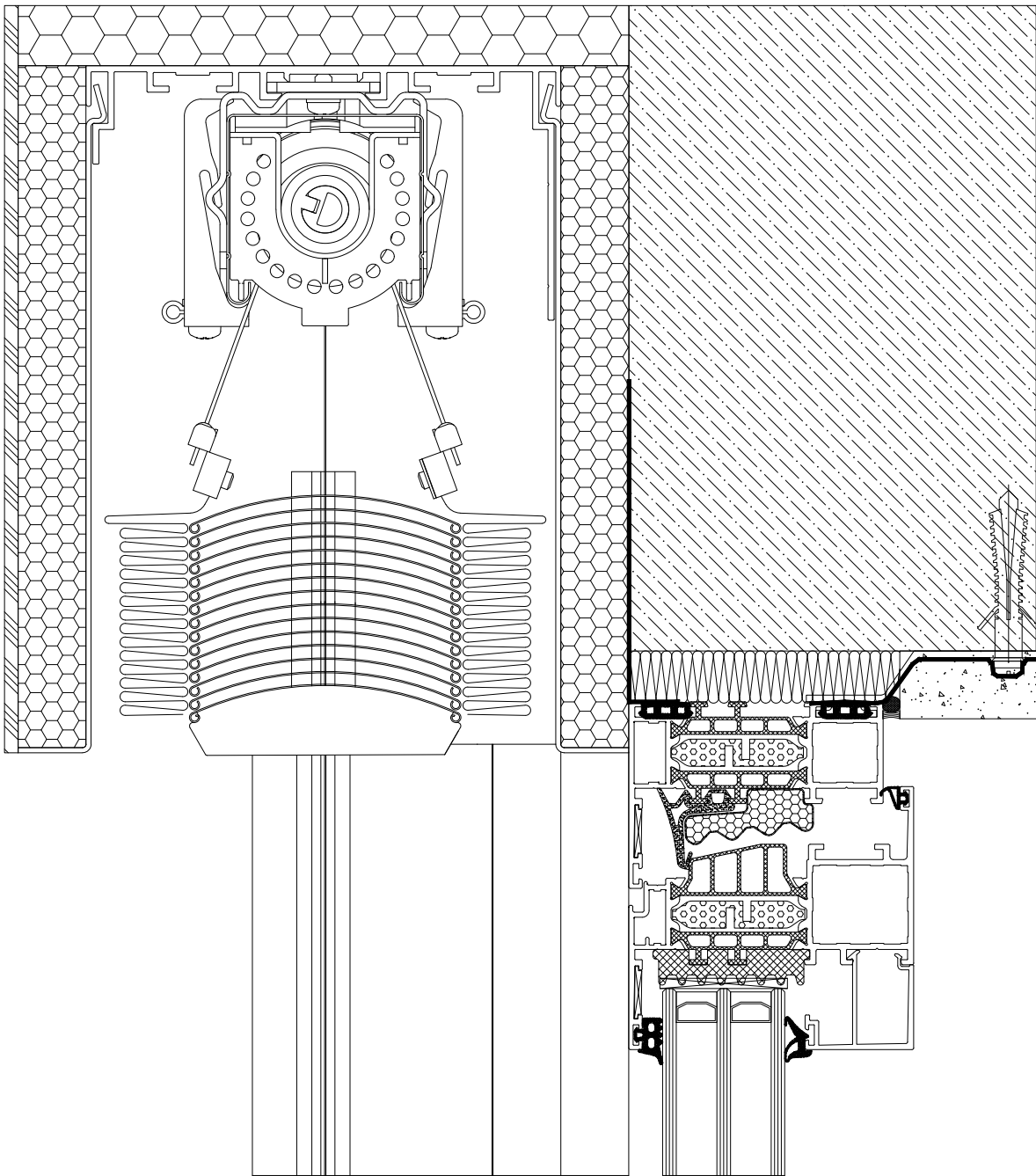


<b>option</b>	<b>guide channel</b>
concealed	guide channel N91
protruding window	

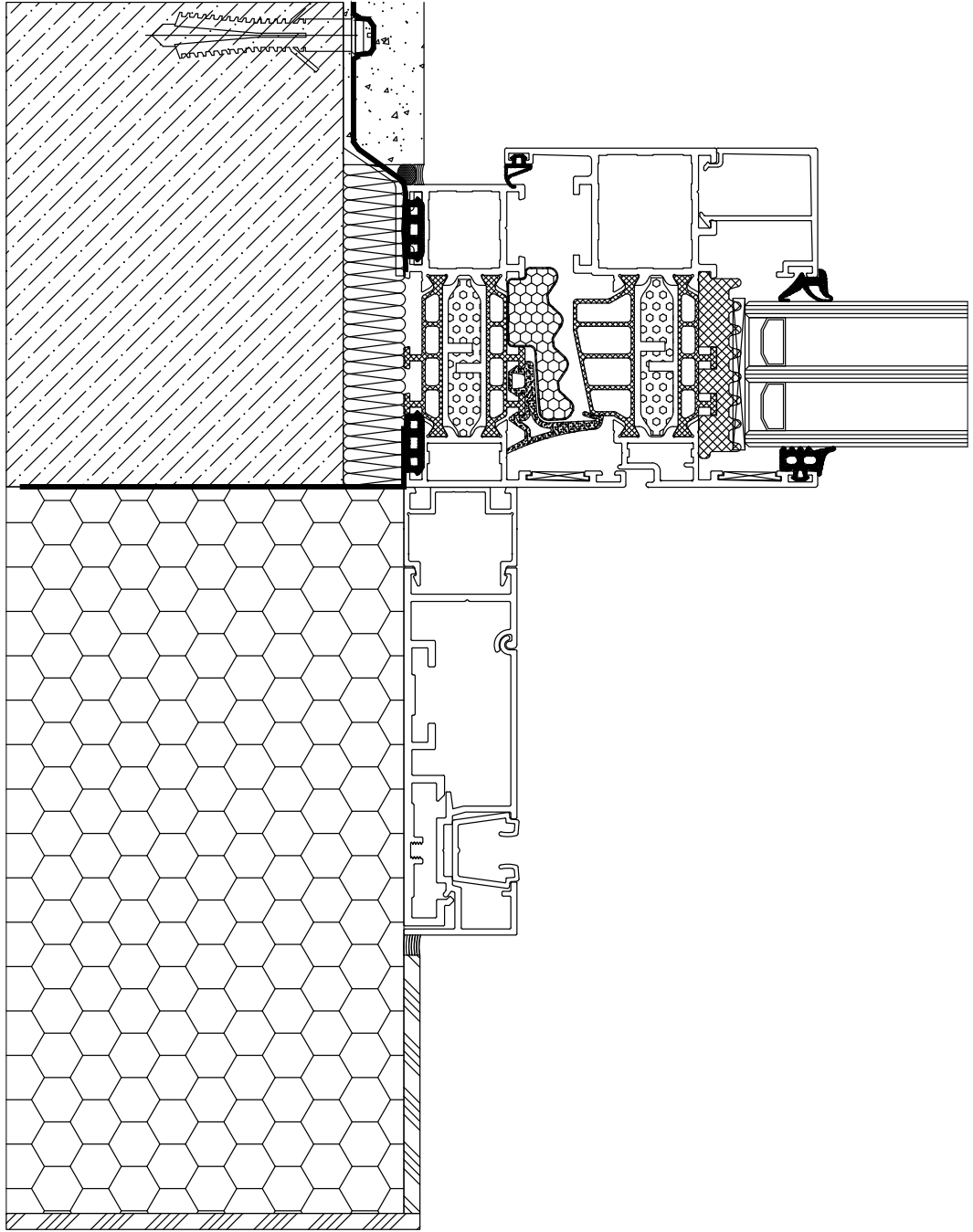




option	guide channel
concealed	guide channel N91
protruding window	



option	guide channel
concealed	guide channel N91 + width extension
flush-with-wall window	



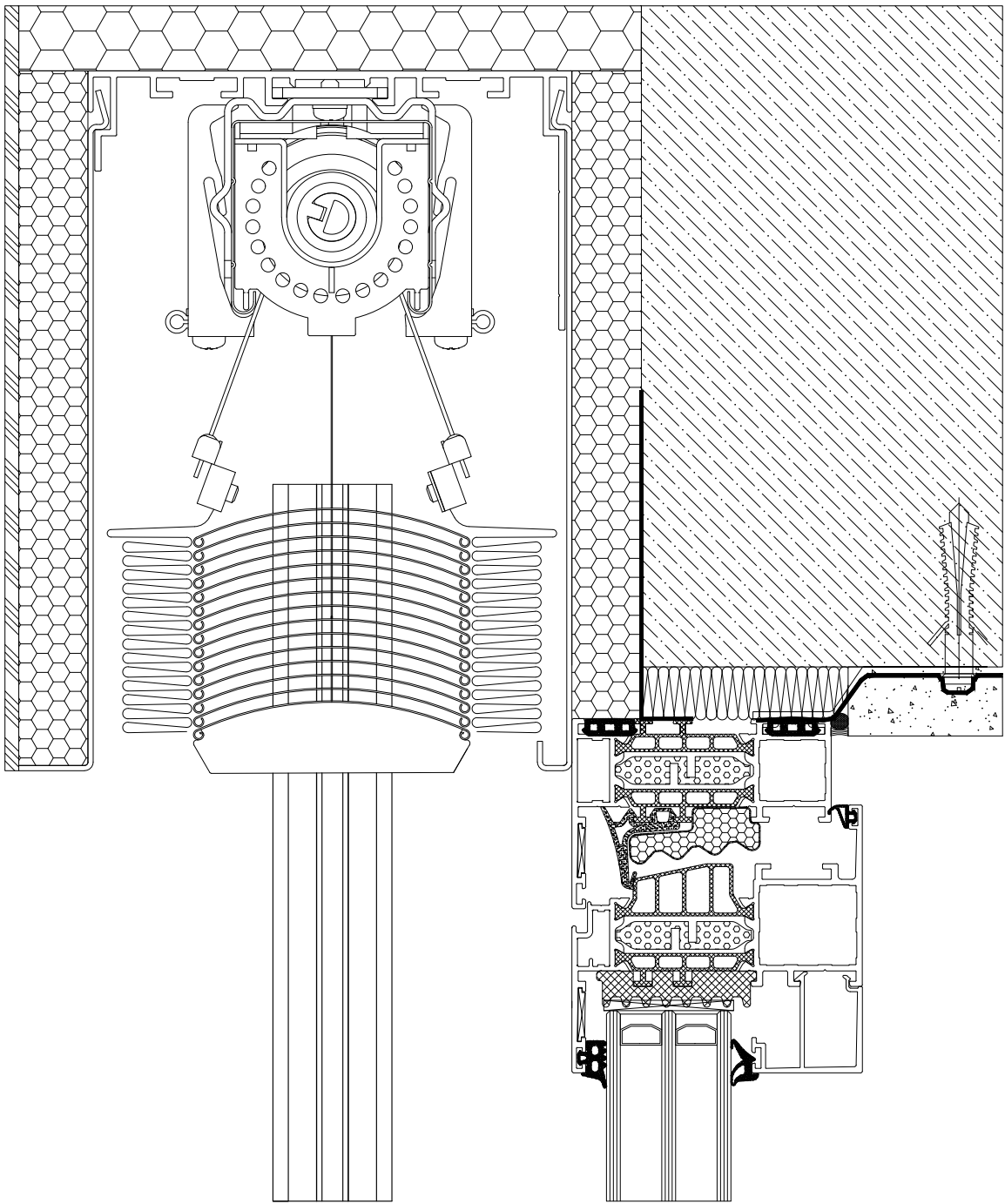
**option**

**guide channel**

concealed

guide channel N91 + width extension

flush-with-wall window



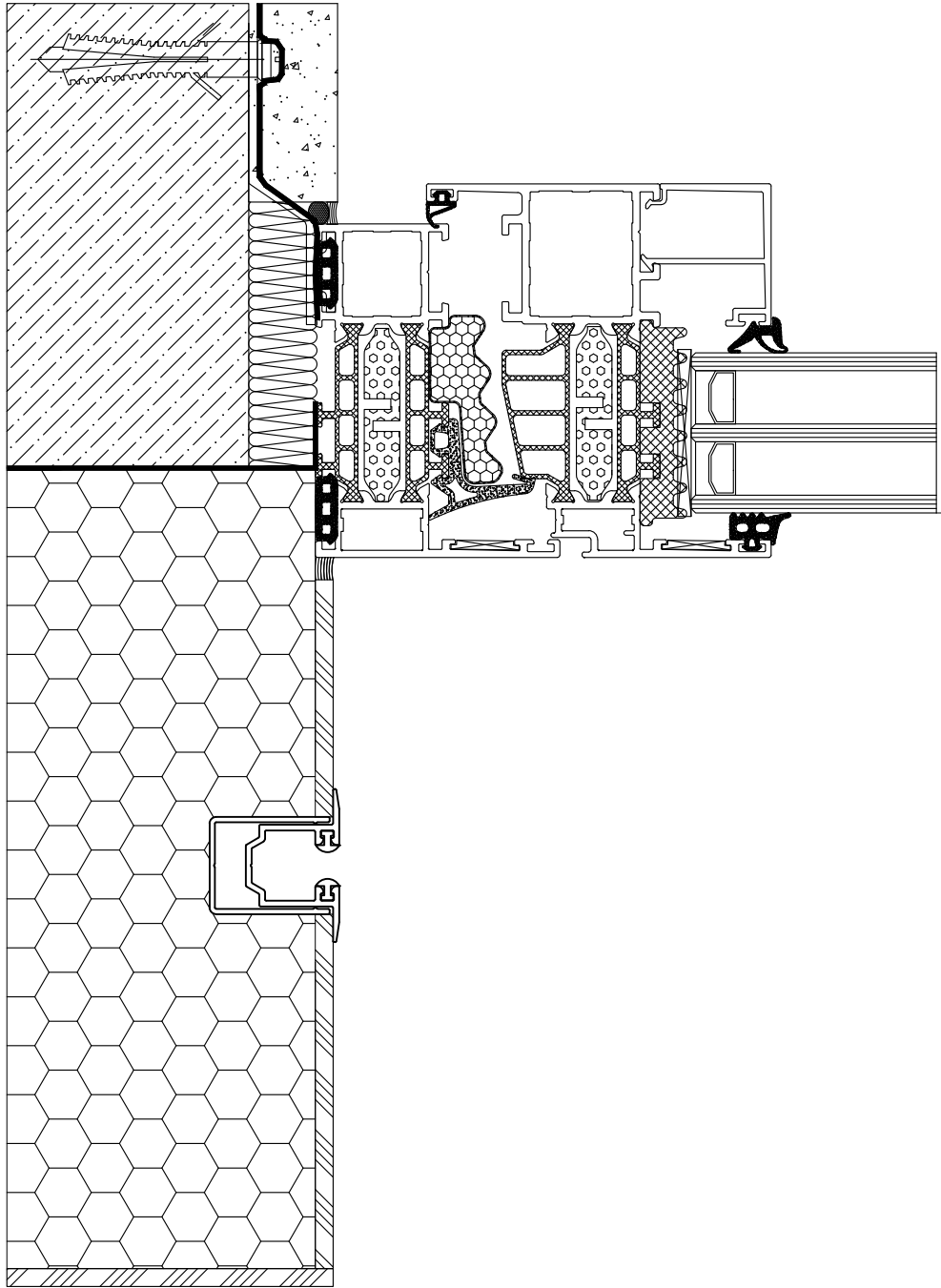
**option**

**guide channel**

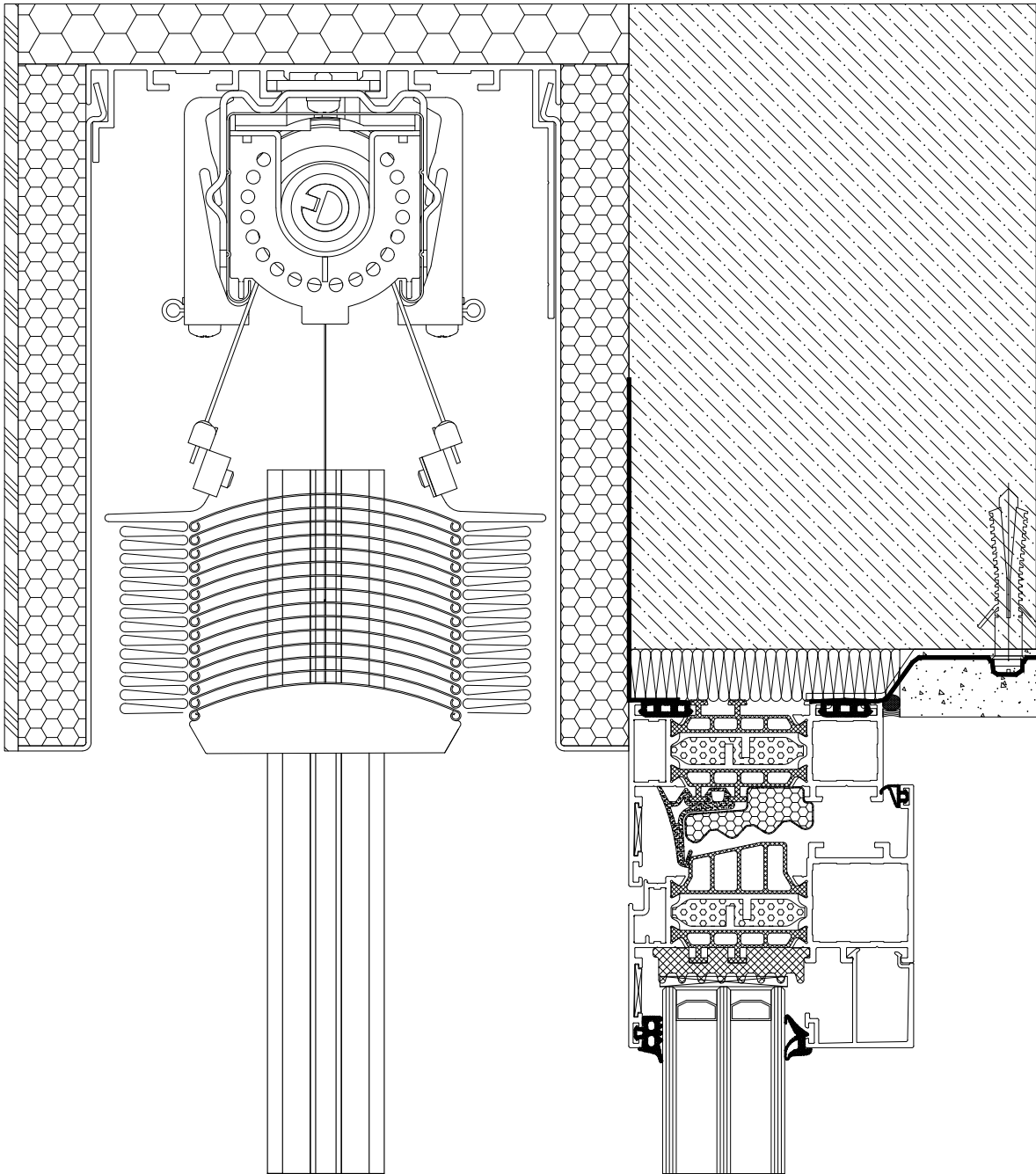
concealed

concealed guide channel Z34

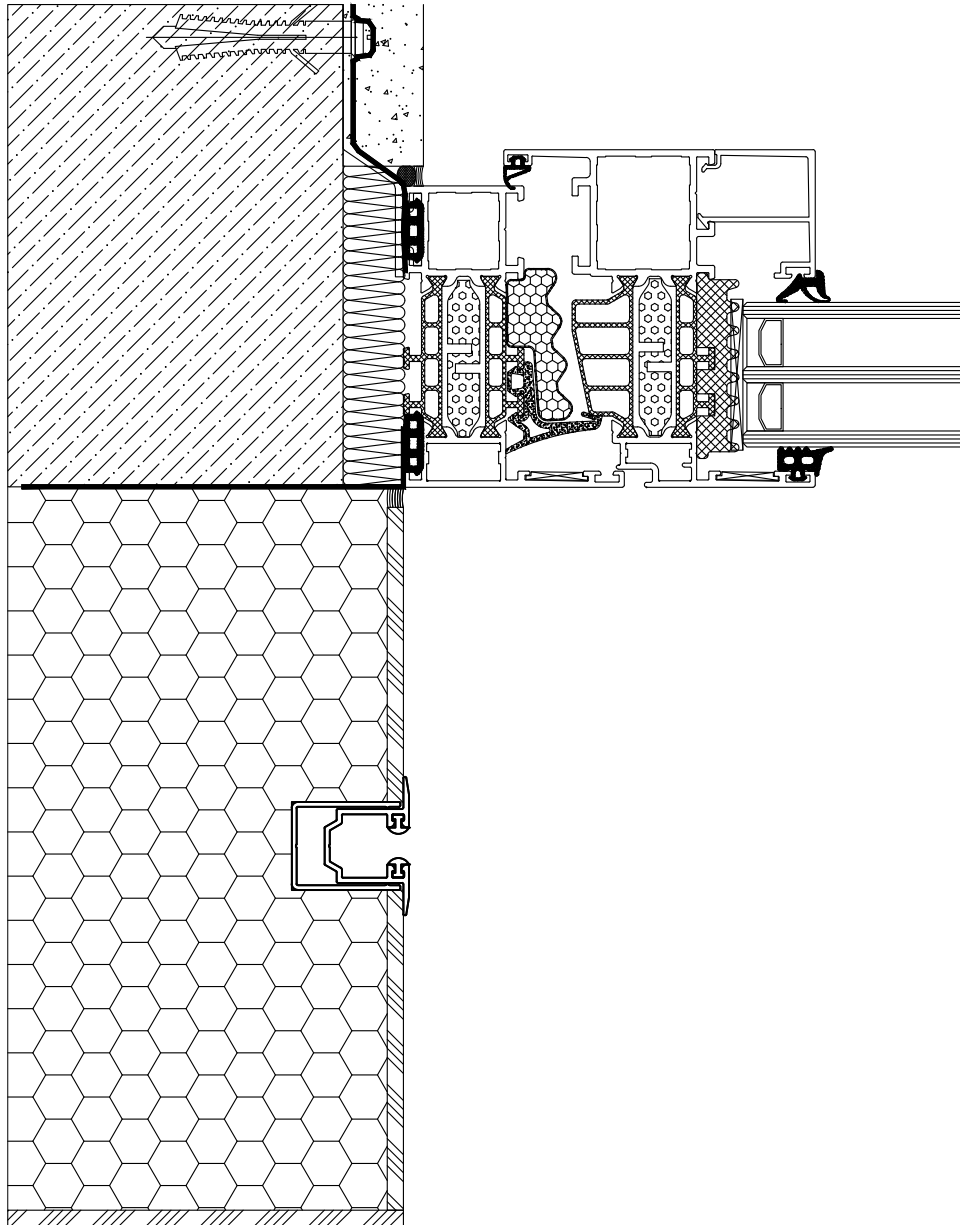
protruding window



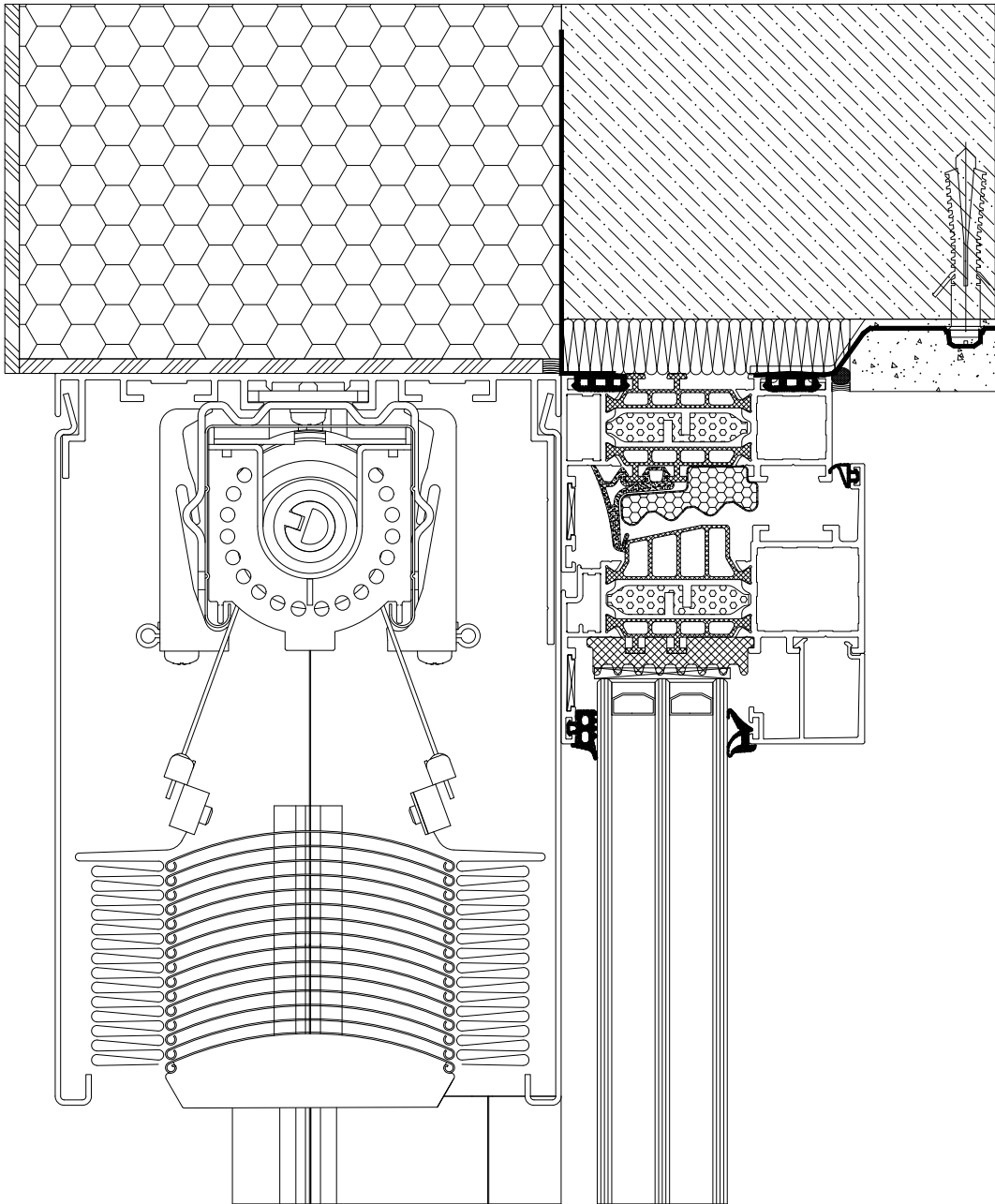
option	guide channel
concealed	concealed guide channel Z34
protruding window	



<b>option</b>	<b>guide channel</b>
concealed	concealed guide channel Z34
flush-with-wall window	



option	guide channel
concealed	concealed guide channel Z34
flush-with-wall window	



**option**

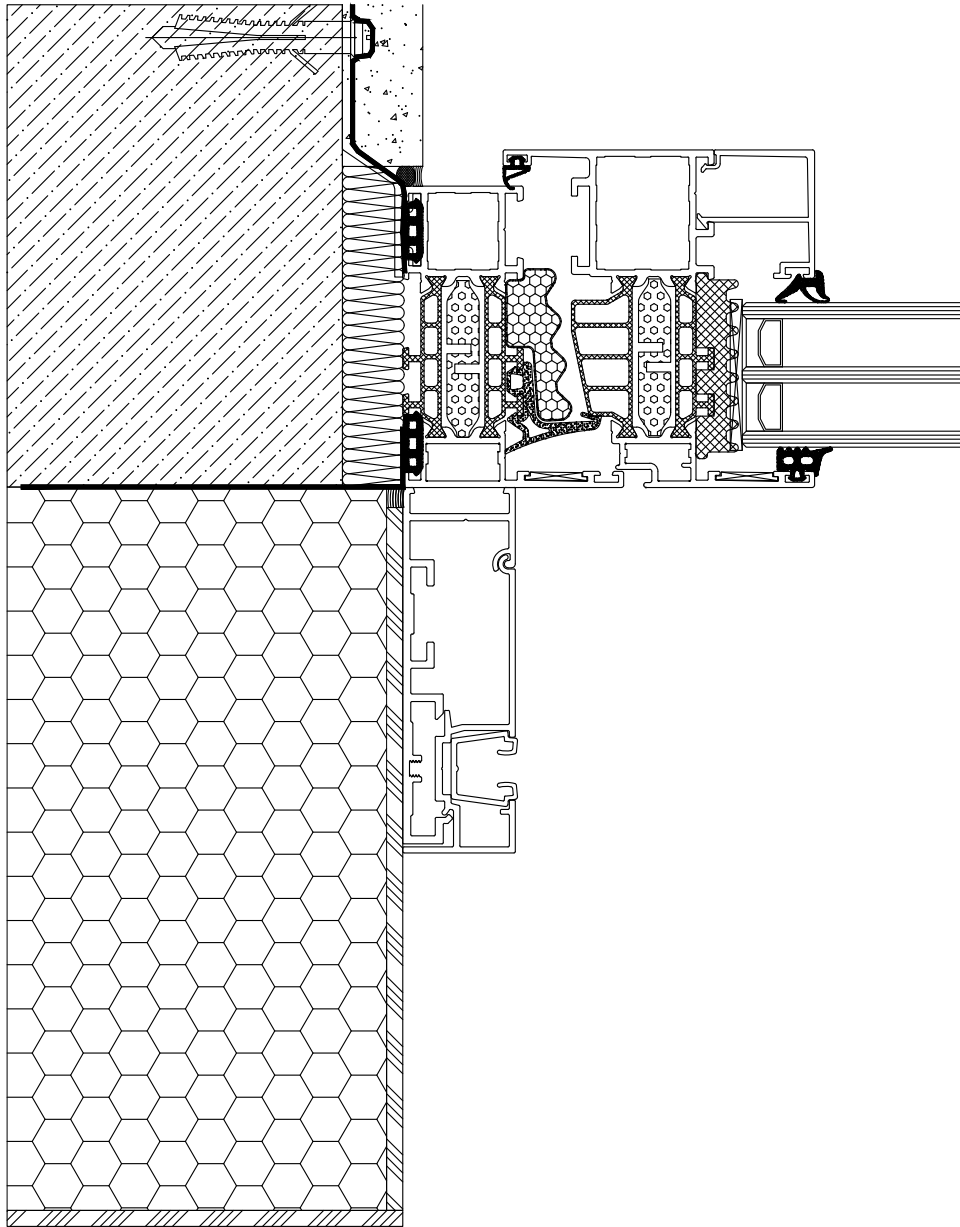
**guide channel**

adaptive

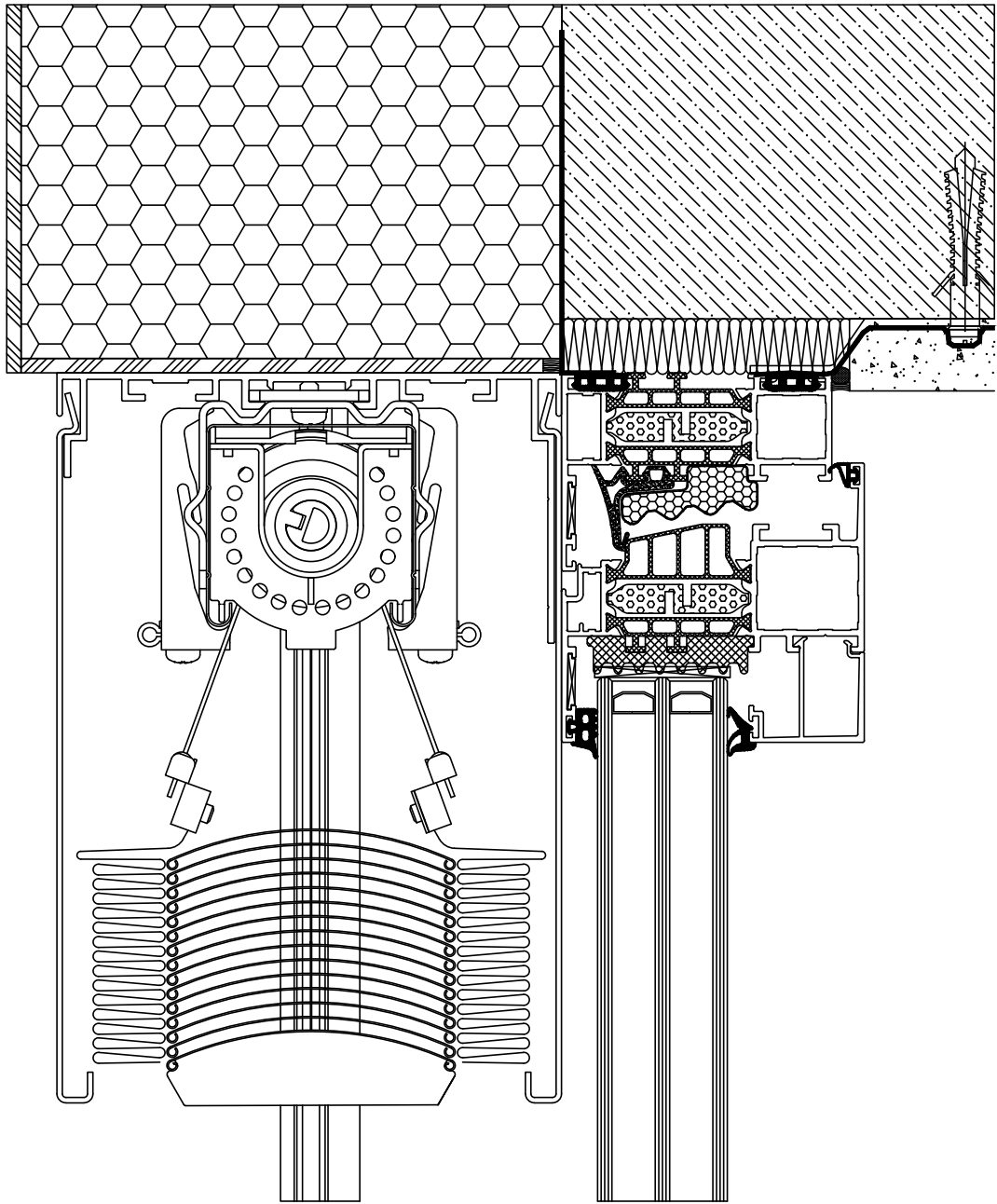
guide channel N91

flush-with-wall window





option	guide channel
adaptive	guide channel N91
flush-with-wall window	



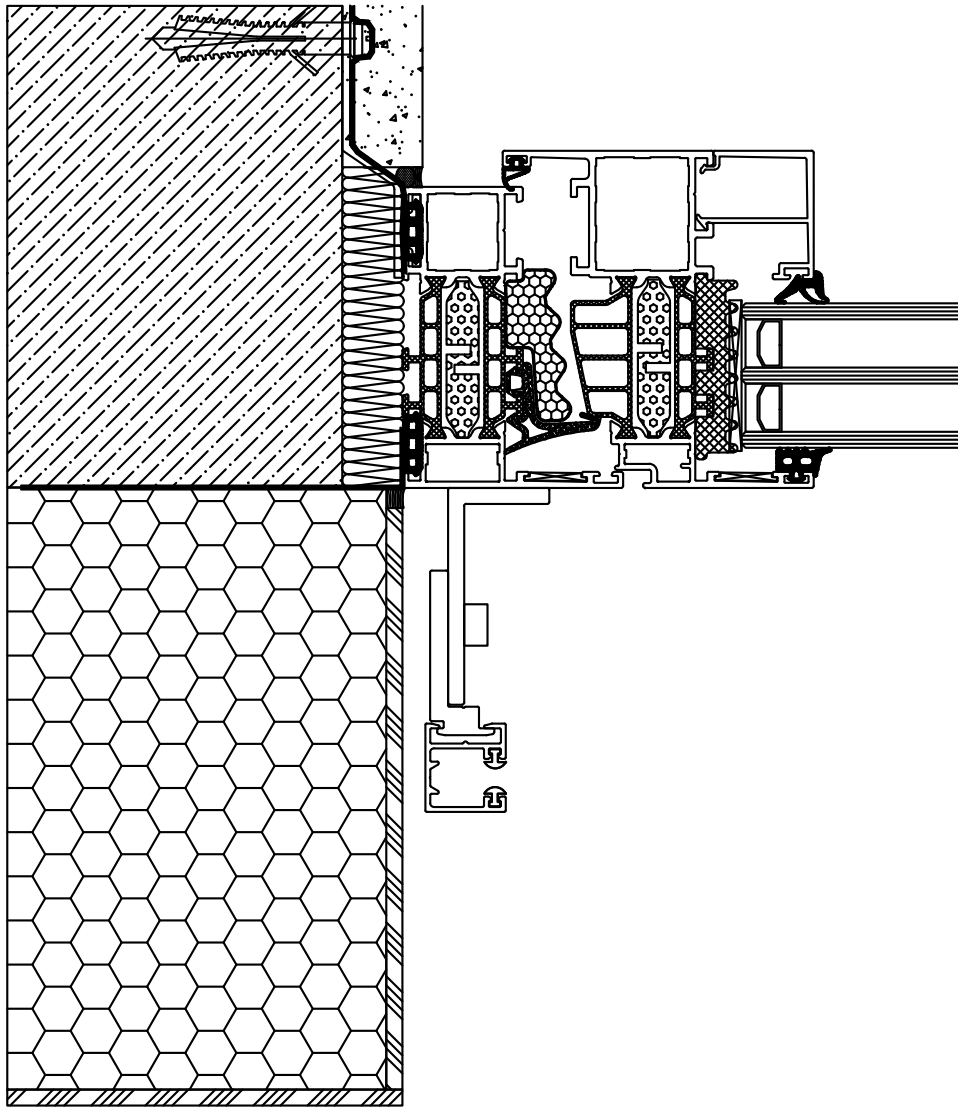
**option**

**guide channel**

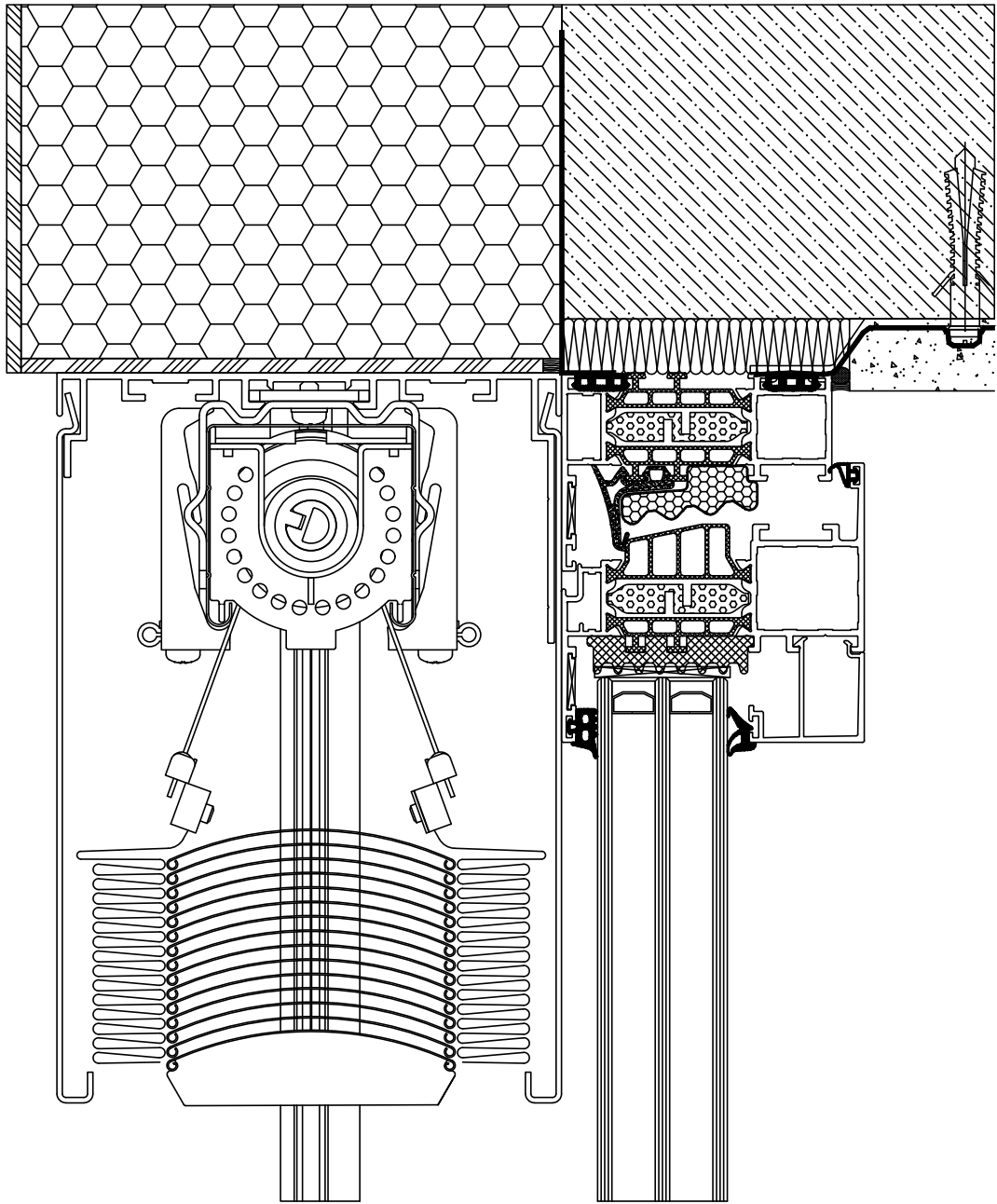
adaptive

guide channel D22

flush-with-wall window



option	guide channel
adaptive	guide channel D22
flush-with-wall window	



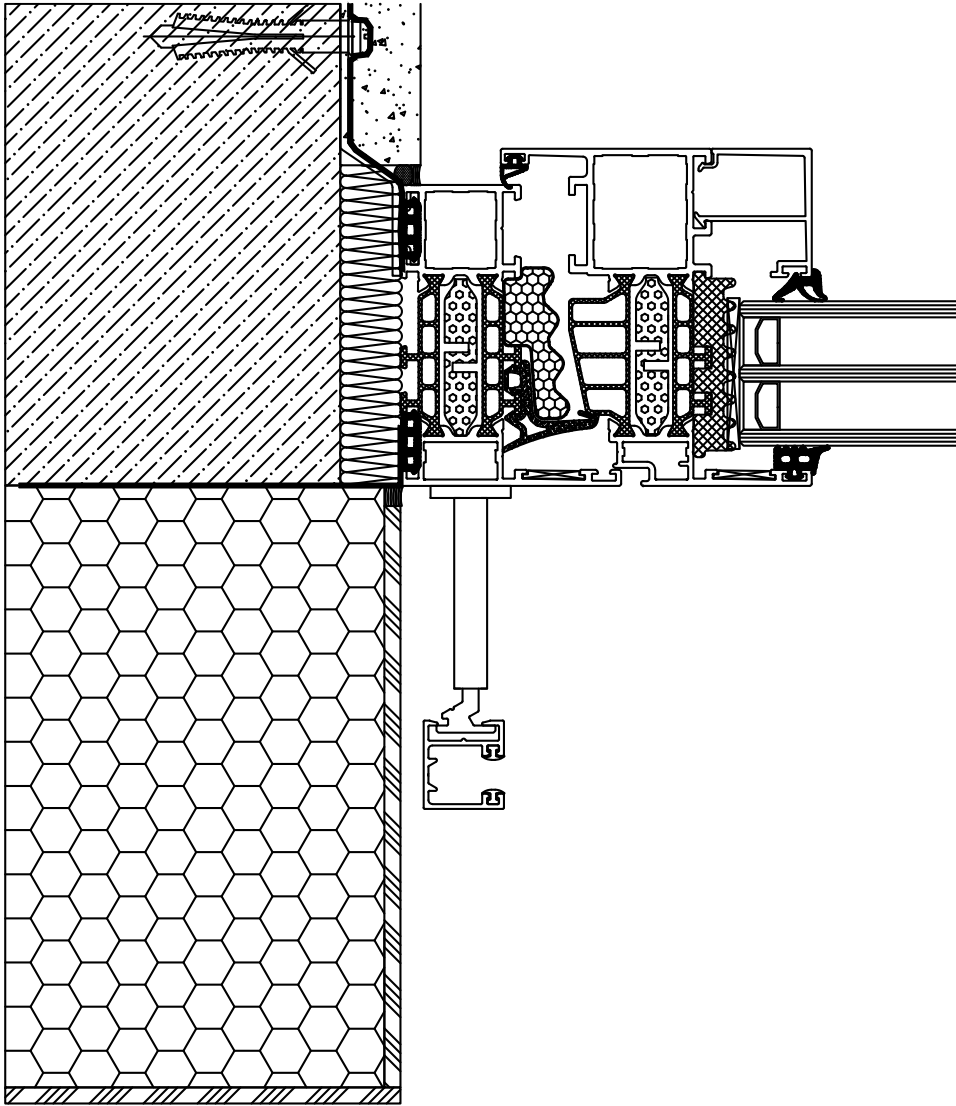
**option**

**guide channel**

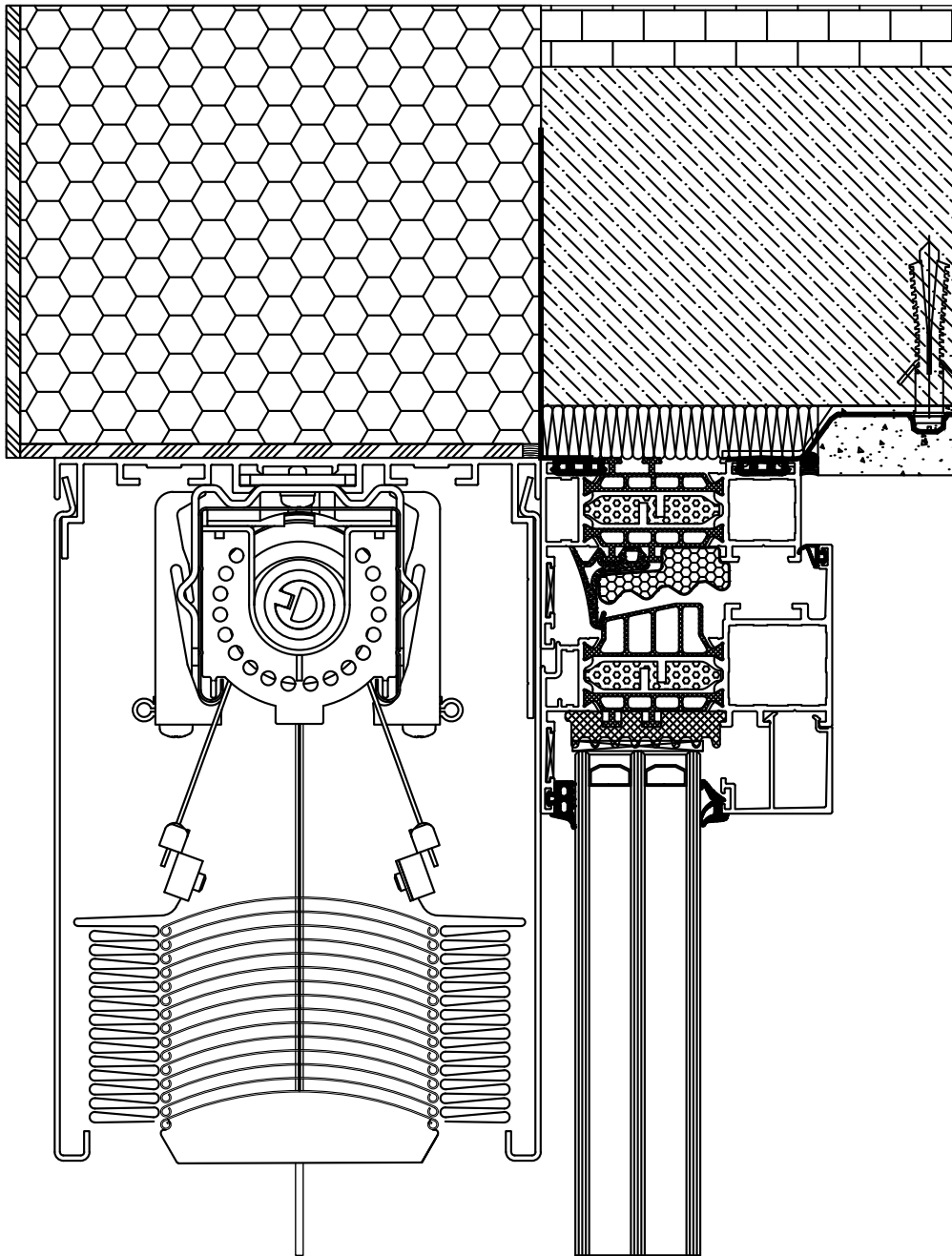
adaptive

guide channel D22

flush-with-wall window



option	guide channel
adaptive	guide channel D22
flush-with-wall window	



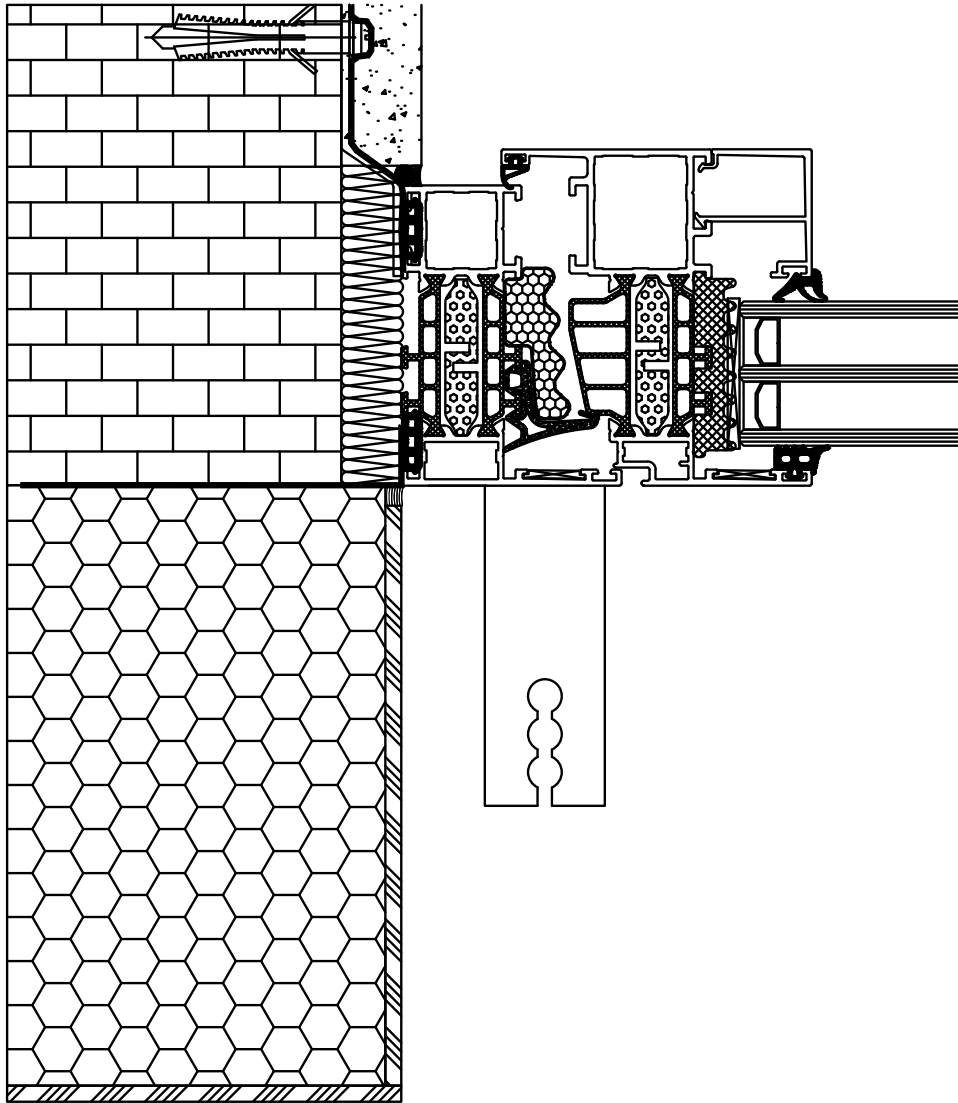
**option**

**guide channel**

adaptive

wire guide

flush-with-wall window



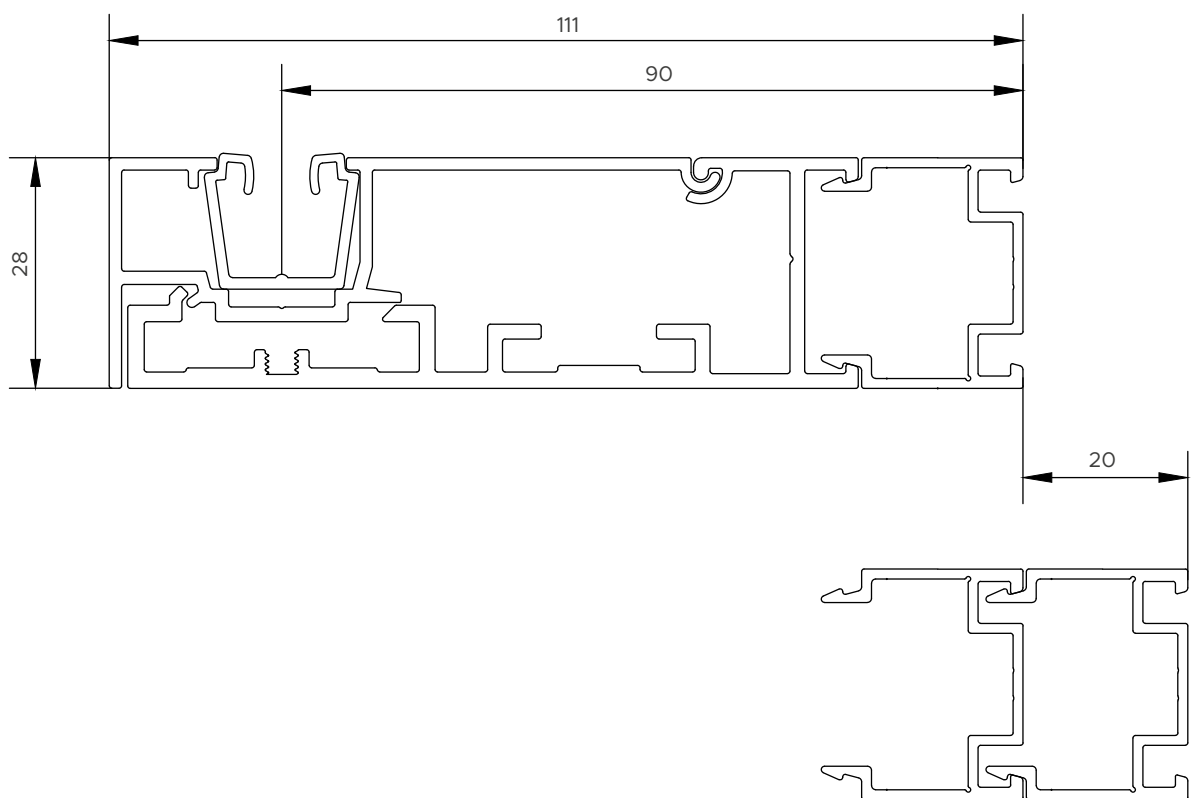
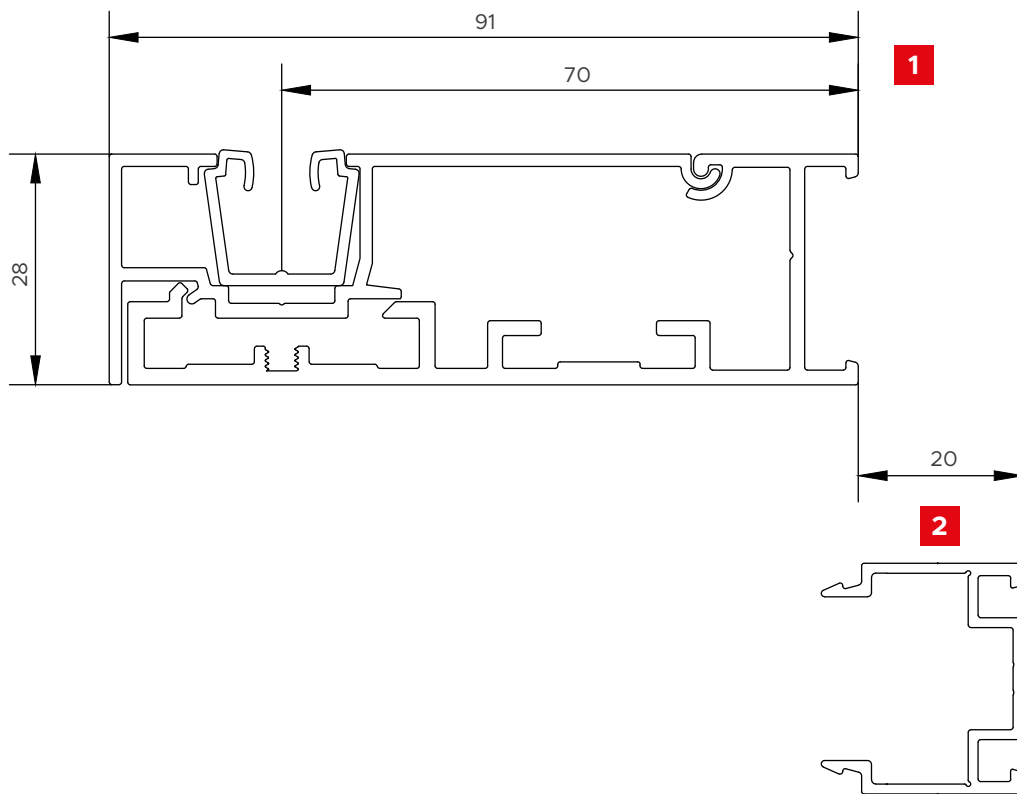
**option**

**guide channel**

adaptive

wire guide

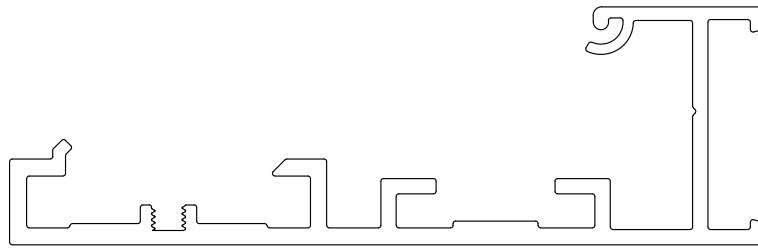
flush-with-wall window



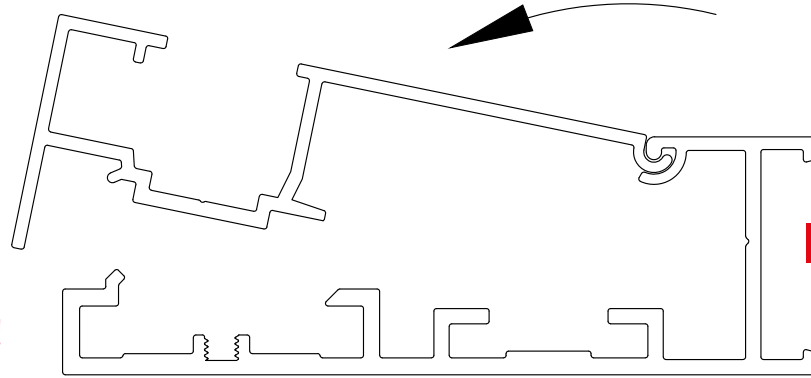
**1** guide channel N91

**2** guide channel N91 extension



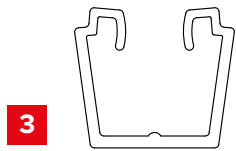


1

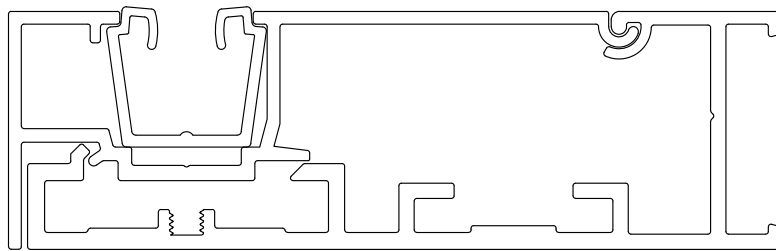
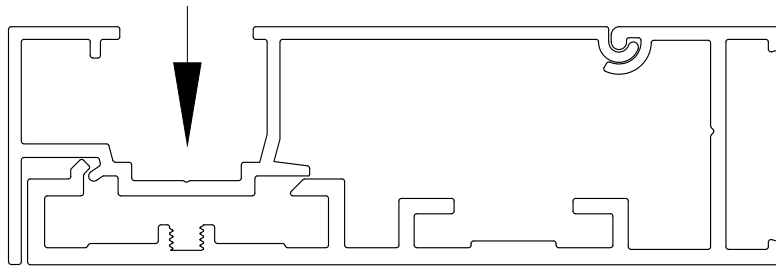


CLICK!

2



3



guide channel N91 base

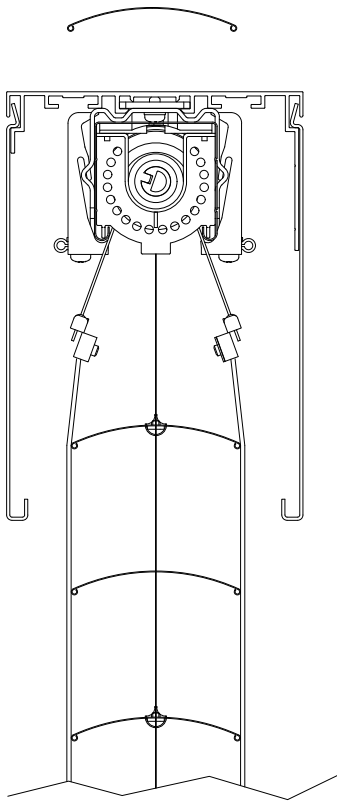
1

guide channel guard installation method

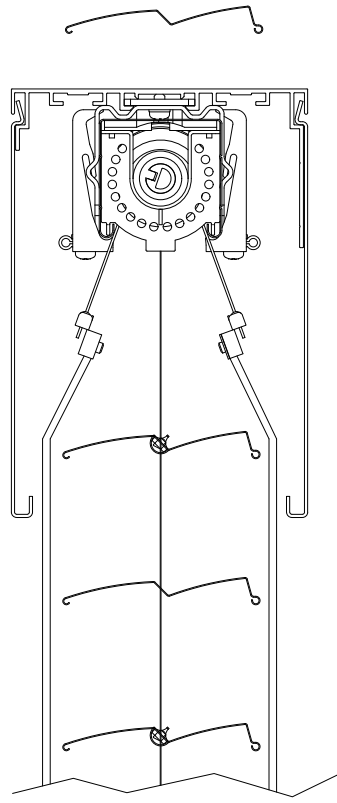
2

installation of the blind guiding component

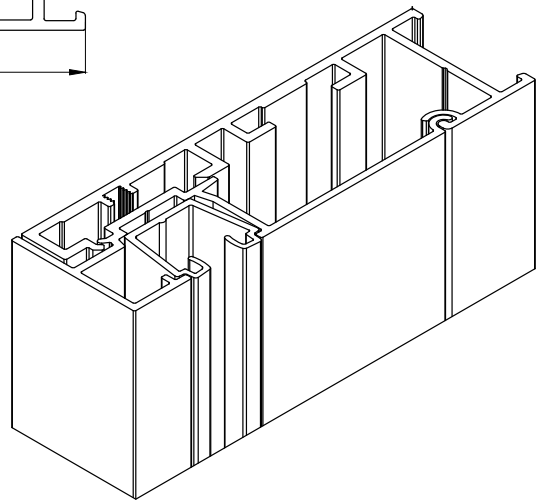
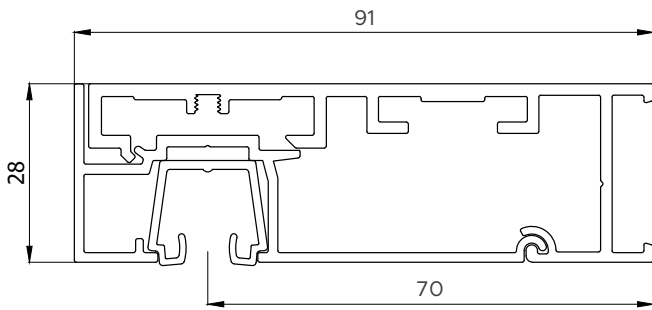
3



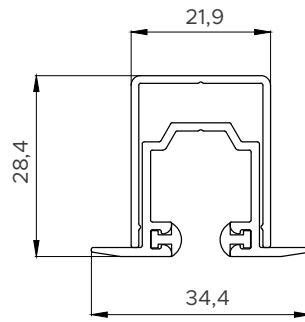
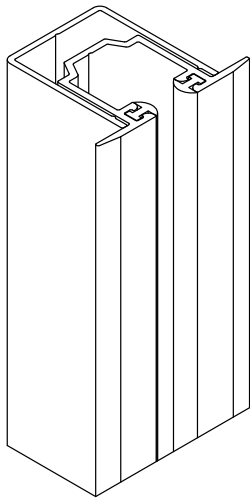
**C80** system cross-section



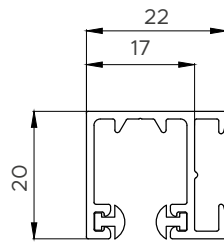
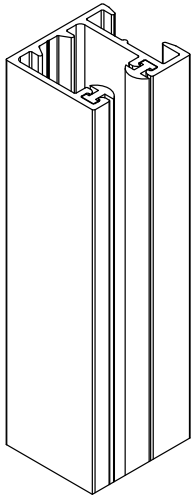
**Z90** system cross-section



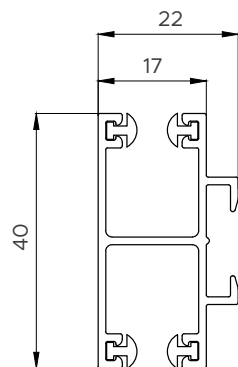
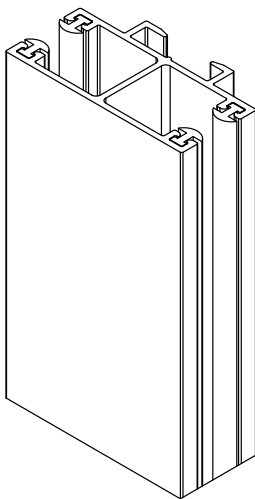
**N91** guide channel N91



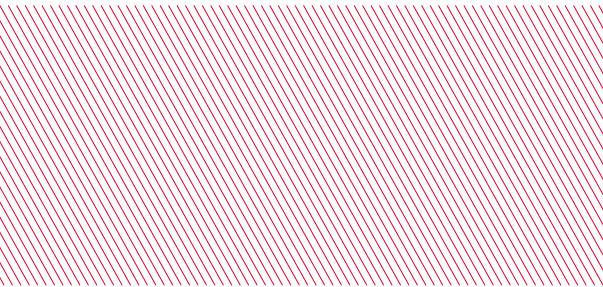
in-wall guide channel Z34



guide channel with spacer D22



central guide channel with spacer D40



**aliplast**  
aluminium systems

**Aliplast Sp. z o.o.**

ul. Wacława Moritza 3  
20-276 Lublin, Poland

**Contact**

Tel.: +48 81 745 50 30  
Fax: +48 81 745 50 31  
E-mail: [biuro@aliplast.pl](mailto:biuro@aliplast.pl)  
E-mail: [systemyoslonowe@aliplast.pl](mailto:systemyoslonowe@aliplast.pl)

**Information**

Taxpayer Identification Number (NIP): 946-23-54-607  
National Court Register Number (KRS): 0000119312  
[www.aliplast.pl](http://www.aliplast.pl)