

GENESIS 75

VENTILATION SASH

aliplast
aluminium systems



window and door systems



Genesis 75 ventilation sash

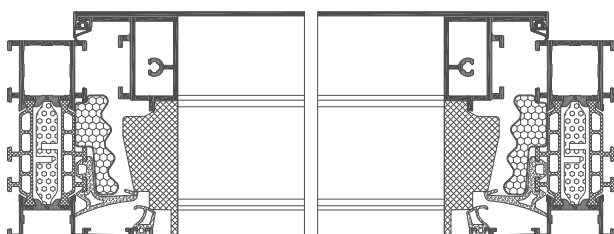
- system of non-transparent ventilation flaps used in façade and window-door structures
- visible width of the ventilation sash: 106 mm
- the solution is located at a depth of 75 mm, compatible with the Genesis 75 system (the GN 75 ventilation sash is flushed externally with the profile of each window frame of the Genesis 75 system)
- thermal insulation performance corresponds to the standards of the Genesis 75 system
- the use of dedicated hardware allows the ventilation sash to be designed as vertical and horizontal
- it is possible to integrate ventilation sashes with the central building management system: installed appropriate sensors (e.g. weather, smoke, carbon monoxide sensors) will respond by closing or opening the sashes, ensuring the safety of people in and around the building
- wide range of colours – RAL palette (Qualicoat 1518), textured colours, Aliplast Wood Colour Effect – wood-like colours, Aliplast Loft View – colours imitating stone surfaces (Qualideco PL-0001), anodised colour (Qualanod 1808), bi-colour

GENESIS 75

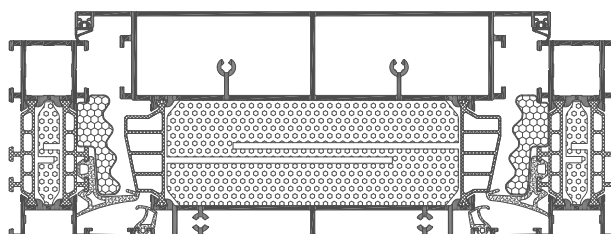
VENTILATION SASH

aliplast
aluminium systems

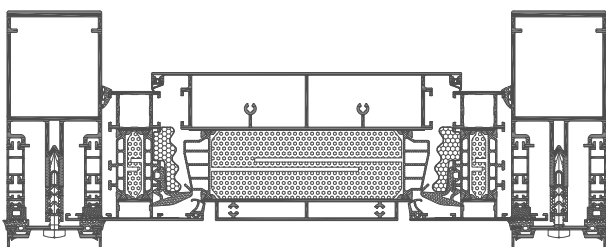
window and door systems



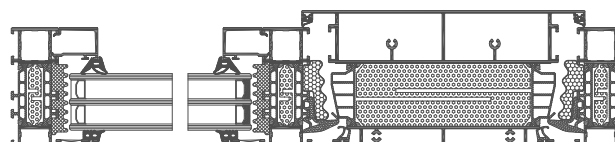
cross-section of the GN 75 ventilation flap (GN010)



ventilation flap GN 75 (GN010 + GN024)



ventilation flap GN 75 in a combination with a mullion-transom façade
(GN010 + GN024 + GN010 + MC413)



ventilation flap GN 75 in a combination with a window with fixed glazing
(GN010 + GN030 + GN024 + GN010)